

# WTC ProductCenter™

A T T H E C E N T E R O F Y O U R S U C C E S S



W T C

ProductCenter  
←

Web-enabled  
Collaborative Product Data Management  
for the Extended Enterprise

# Accelerating

## Your Product Development Success...

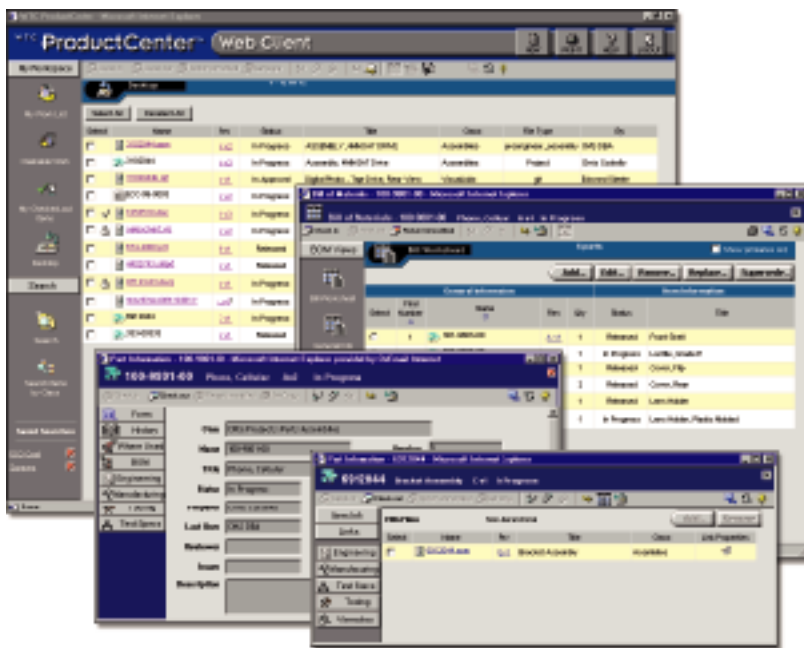
The complex processes involved in today's product development demand a product data management (PDM) solution that measures up to the job.

**WTC ProductCenter™**, WTC's collaborative PDM solution, gives your product development team the quality tools needed to more effectively manage your product development data and processes.

WTC ProductCenter works reliably throughout your company's extended enterprise to drive process improvements and speed time-to-market, all resulting in significant savings. Companies that use WTC ProductCenter can:

- Gain secure access to product data via the Web, allowing design teams to collaborate more productively.
- Control sharing among cross-functional, geographically dispersed teams, so that the right people see the right version of the information at just the right time.
- Speed communication and collaboration throughout your extended enterprise – with documentation and full revision histories for reference or regulators, and for reduced compliance costs.
- Automate and accelerate business processes from review cycles to management of configuration, change, and release.

WTC ProductCenter streamlines your processes, from consolidating your product data throughout your enterprise, to putting up-to-date product information on the factory floor.



WTC ProductCenter™

Business decisions are driven with accurate and timely information, based on ProductCenter's centralized knowledge of your critical engineering data and processes – no matter how widely the information or your product teams are distributed. This results in impressive savings in cost and time.

Taking full control of your engineering data throughout your company reduces cost in many other ways. ProductCenter enables you to track every drawing and part – allowing for the reuse of designs, smaller part inventories, reduced scrap and rework, and the fullest employment of every idea and component created by your product development teams.

WTC ProductCenter is a practical, results-driven approach to product data management. As a mature, proven system, it's recognized for its speed of deployment and its ability to efficiently scale from small installations to globally distributed systems.

# Automating

## Your Product Development Environment...

ProductCenter's V

### Extensive Data Modeling Capabilities

WTC ProductCenter™ provides the data modeling capabilities needed to organize and relate product data for efficient access and management of information throughout the product lifecycle.

**Named Links.** Product configurations in ProductCenter are made up of objects that are connected or linked to one another, through *Named Links*. These links provide a rich semantic context to the relationships between two objects. This allows users to filter the view of product information to what is important and meaningful to them.

**Version and Revision Control.** ProductCenter provides customizable version and revision control with rollback capabilities, while maintaining a complete revision history throughout the product lifecycle.

**Release Management.** It is essential to record and track the flow of data through a product's development and release cycles. Release

management allows users to freeze specifications, designs, and documentation at a fixed position for released revisions, while allowing them to work on these items for future versions.

### Business Process Workflow

ProductCenter's workflow and release management capabilities automate and speed up business processes from review cycles to configuration to change and release management. ProductCenter can be configured with optional modules to extend its power even further.

**WTC ProductCenter™ Workflow** provides a flexible process management application that lets administrators model the flow of product data. A powerful new engine adds workflow functions that route requests to the appropriate individuals with the information

### Full Access

The Internet and the use of extended product development teams make flexible access to product data a necessity. People and product data can be located anywhere – requiring careful coordination and tracking of changes via secure remote access.

Easy-to-use and customizable graphical interfaces are necessary as PDM systems reach a wider community of users across a company's internal and external networks.

ProductCenter's array of access and integration tools allow users to manage product data from within their standard applications and environment. Your company can integrate ProductCenter's PDM capabilities with:

- computer-aided design (CAD) and electronic document management (EDM) applications,
- enterprise resource planning (ERP) systems,
- customer relationship management systems,
- supply chain management systems,
- other legacy systems.

### Controlled & Secure Information

Secure information is quickly accessible to those who need it with ProductCenter's distributed electronic vault and easy-to-manage administration system. Users organize and share information throughout the enterprise, while access is controlled by assigned permissions.

The system administrator controls the access model for individual users or groups. Users in a group can have access to the same work items, each of which has its own set of user and group permissions. The end result is secure information made easily accessible to those who need it – any time, anywhere.

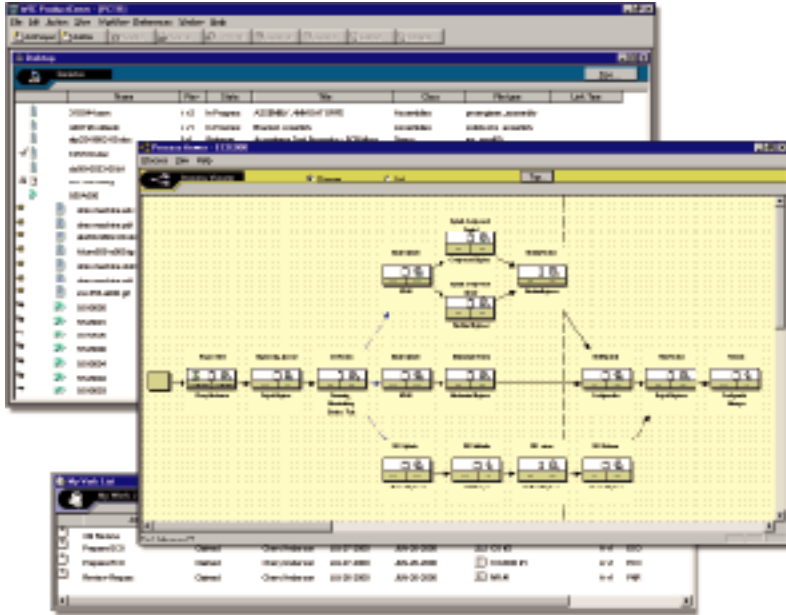
In all, WTC ProductCenter allows your design teams to collaborate with each other and with customers and suppliers to improve your overall product development efficiency and optimize innovation.

*“ProductCenter decreased our time-to-market on products, because it gave users a window into the engineering world and allowed change to happen more rapidly and in a more controlled way.”*

**Mike Lambert,  
Administrator,  
BetaLaser Mike Systems**

to-market while increasing product quality and reducing development costs.

**Workflow and BOM Editor provide a single solution for effectively managing product configurations.**



WTC ProductCenter™ Workflow

*“WTC ProductCenter allows us to consolidate critical product development information and share that information electronically in a browser-based environment. This speeds the collaborative process, both within our internal product development teams and externally with our customers. We feel this is necessary to manage our substantial growth while maintaining responsiveness to market needs.”*

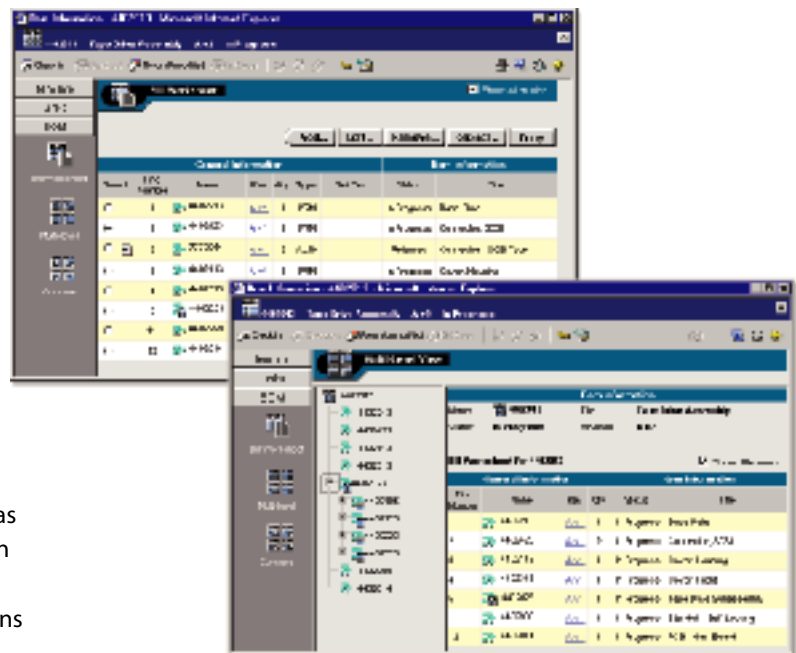
**Jeff Muchow, VP of Engineering and Quality, Xandex, Inc.**

needed to perform the work. As design components are released, team members anywhere in the enterprise can access and review the design.

- The graphical *Process Editor* simplifies the process definition. The workflow administrator can streamline and automate task assignments, specifying the tasks to be completed, whether they are parallel or sequential, the order they should be performed, and alternate routes that the process can take.
- The *Process Viewer* allows users to graphically track the progress of any work item as it moves through the process.

## Engineering Bill of Materials Management

The Web-based **WTC ProductCenter™ BOM Editor** is a flexible and easily-customized solution for managing engineering BOMs throughout the product lifecycle. It provides for the definition and editing of primary, alternate, and reference parts as well as the editing of attributes such as find number, quantity, effectivity, and reference designator. In addition, the BOM Editor has the capability for viewing fully exploded multi-level BOMs and performing BOM comparisons in order to determine changes between BOM revisions or across multiple BOMs.



WTC ProductCenter™ BOM Editor

# Enhancing

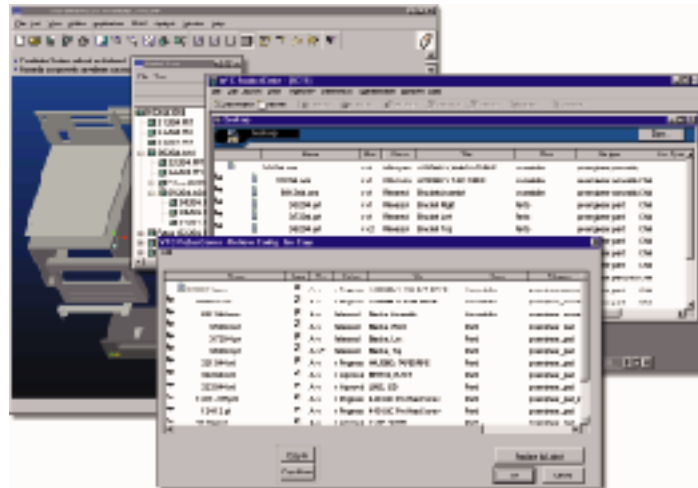
## Your Product Development Experience...

### Integrations with Popular Applications

WTC ProductCenter<sup>TM</sup> provides application-specific integrations with popular CAD and EDM applications, including Pro/ENGINEER<sup>®</sup>, SolidWorks<sup>®</sup>, AutoCAD<sup>®</sup>, Adobe<sup>®</sup> Acrobat<sup>TM</sup>, and Microsoft<sup>®</sup> Office. ProductCenter's direct integrations into these products enable users to work with and manage their product data from within familiar application environments. This allows them to share and modify information rapidly and easily, accelerating innovation and improving accuracy.

**Pro/ENGINEER<sup>®</sup> Integrator.** WTC's ProductCenter<sup>TM</sup> Pro/ENGINEER<sup>®</sup> Integrator provides file management and enterprise-wide PDM for Pro/ENGINEER users. It supports Pro/ENGINEER's complex file dependencies, maintaining data consistency inside and outside the environment and providing control over the flow of information to manufacturing – ensuring design integrity and enhancing collaboration.

**SolidWorks<sup>®</sup> Integrator.** WTC's ProductCenter<sup>TM</sup> SolidWorks<sup>®</sup> Integrator, similar to the Pro/ENGINEER integrator, provides SolidWorks users with access to the information they need to build, release, and distribute SolidWorks configurations. Users can collaborate by sharing parts, assemblies and associated drawings (including eDrawings<sup>TM</sup>), and link to information generated by other applications, while managing in-process design activity – all from within SolidWorks.



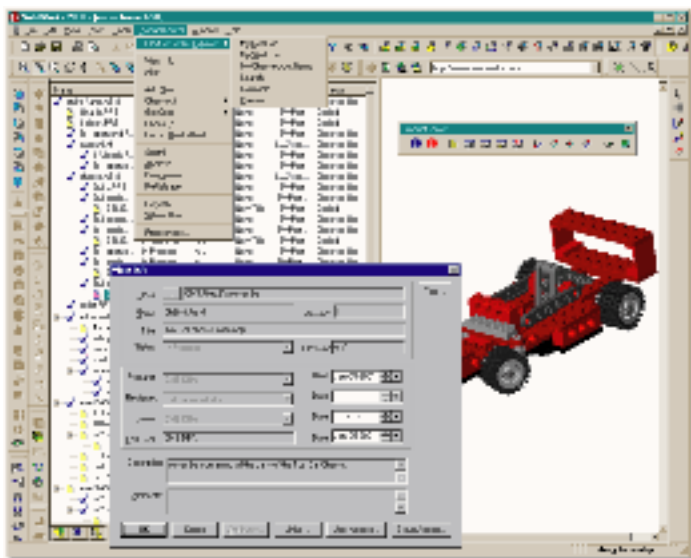
WTC ProductCenter<sup>TM</sup> Pro/ENGINEER<sup>®</sup> Integrator

### ProductCenter Toolkits

WTC's ProductCenter Toolkits allow direct programmatic access to ProductCenter for automating routine tasks and customizing your product development environment to your specific needs.

ProductCenter's toolkits provide powerful means to build custom Web-based applications to access ProductCenter information. They allow you to customize your product development environment by automating tasks such as generating viewables of third party documents, batch loading of product data, automating workflow processes, or integrating other enterprise information systems such as ERP.

- **WTC ProductCenter<sup>TM</sup> WebLink Toolkit.** The WebLink Toolkit makes it easy to build HTML-based Web applications for managing information within WTC ProductCenter.
- **WTC ProductCenter<sup>TM</sup> C/C++ Toolkit.** The C/C++ Toolkit features responsive performance and a rich feature base supporting ProductCenter's end-user functionality – providing a simple pathway for integration with critical third-party applications.
- **WTC ProductCenter<sup>TM</sup> Perl Toolkit.** The Perl Toolkit expands your programmatic interface choices by offering the same full-featured functionality of the C/C++ Toolkit with the popular Perl scripting language.



WTC ProductCenter<sup>TM</sup> SolidWorks<sup>®</sup> Integrator

**WTC's ProductCenter Toolkits allow you to uniquely automate, integrate, and customize.**

# Winning

## In Today's Market...

Today's companies must work smarter and harder to succeed. Globalization is a fact of life, as companies strive to rapidly shift development and production resources in order to maximize efficiency and reduce cost. They strain to communicate and collaborate better both internally and with supply chain partners and customers. Development teams are stretched to their limits, faced with increasing demand for new, more complex products in less time, while increasing customer demands and regulatory requirements drive the need for mistake-proof process management.

Workgroup Technology Corporation (WTC) addresses today's "better products faster" challenge with its WTC ProductCenter<sup>TM</sup> collaborative PDM solution. WTC ProductCenter delivers a unique and powerful combination of secure product content management, process automation, and enterprise integration to help manufacturers optimize product development – with bottom line results.

WTC's products are recognized for their dependability, flexibility, and low cost of ownership. ProductCenter efficiently scales from small installations to globally distributed systems. Companies can start small to solve a specific problem or quickly grow their implementations to support a global organization of distributed facilities and supply chains. Typical ProductCenter implementations are up and running in a matter of days, and full production deployments are completed within weeks.

WTC's customers span a variety of industries, including telecommunications, medical products, aerospace, automotive, and electronics. Thousands of users at Global 2000 companies benefit from WTC solutions.

*"Using ProductCenter has definitely improved our responsiveness to our customers... bringing us more customer satisfaction and more business."*

**Mark Hamilton-Piercy,**  
IT Engineering Manager, BAE Systems Canada

*"WTC shares our philosophy. They focus on making a product, and seem closer to the factory floor than other vendors."*

**John Russell, Principal Production Engineer,**  
Honeywell International

*"ProductCenter met all of our requirements... and is now the database management system for all of our critical product-related information."*

**Jack Chappell, Engineering Manager and PDM Administrator,**  
Risley Manufacturing

**WTC's only focus is collaborative product data management (PDM).**



Workgroup Technology Corporation  
91 Hartwell Avenue  
Lexington, Massachusetts 02421

Tel: (781) 674-2000  
Fax: (781) 674-0034

W T C

Web: [www.workgroup.com](http://www.workgroup.com)

© 2001 Workgroup Technology Corporation (WTC). All Rights Reserved. WTC, Workgroup Technology, the WTC logo and ProductCenter are trademarks or registered trademarks of WTC. All other brands, products or company names mentioned herein are the copyrights or trademarks of their respective holders.

**ProductCenter**<sup>TM</sup>  
AT THE CENTER OF YOUR SUCCESS

#### SPECIFICATIONS

**Client:** Microsoft® Windows® 95/98/NT, Sun Solaris, HP-UX, SGI Irix, Netscape and Internet Explorer.  
**Server:** Microsoft® Windows® NT, Sun Solaris, HP-UX, SGI Irix  
**Web Server:** Netscape Enterprise Server, Microsoft® Internet Information Server, Apache Web Server  
**Database:** Oracle 8

#### COMPONENTS

**WTC ProductCenter™ Core**  
**WTC ProductCenter™ Workflow**  
**WTC ProductCenter™ BOM Editor**  
**WTC ProductCenter™ Integrators**  
**WTC ProductCenter™ Toolkits**

WTC\_PRC-BR 013001